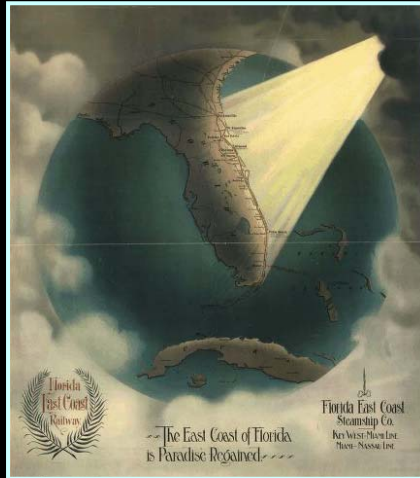


AMTRAK / FEC CORRIDOR PROJECT OVERVIEW & STATUS



... The East Coast of Florida is Paradise Regained ...

(slogan from Florida East Coast Railway advertising poster, 1898)

FLORIDA STATEWIDE PASSENGER RAIL COMMISSION MEETING

January 18, 2011

Florida Passenger Rail Vision Plan (2006)



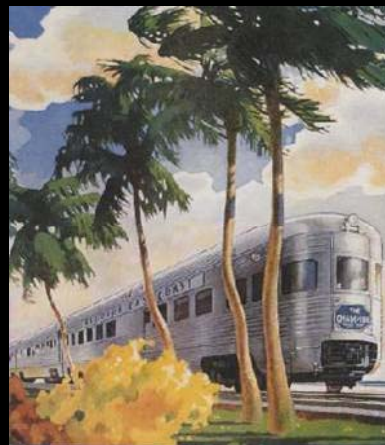
SOURCE: Florida Intercity Passenger Rail "Vision Plan" (FDOT, August 2006)

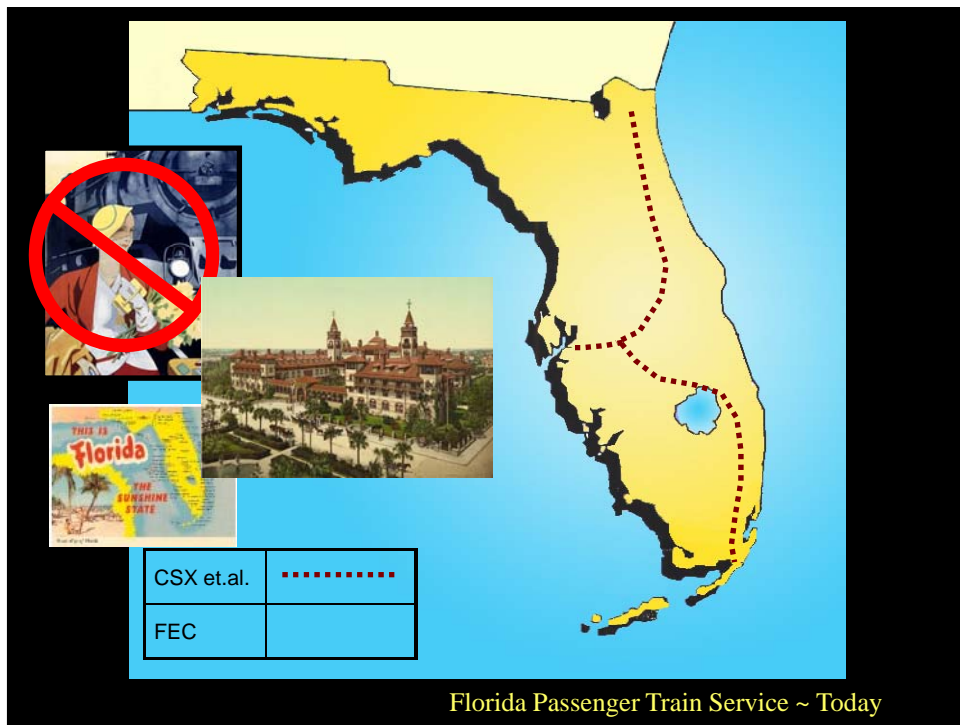
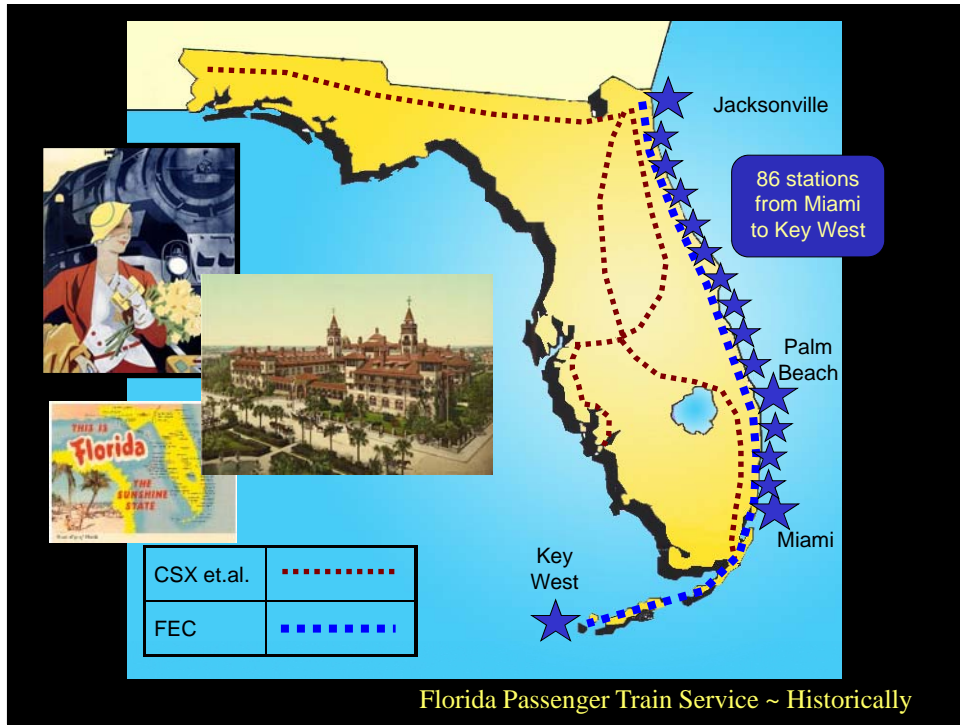
Amtrak/FEC Corridor Project *(Jacksonville - West Palm Beach - Miami)*

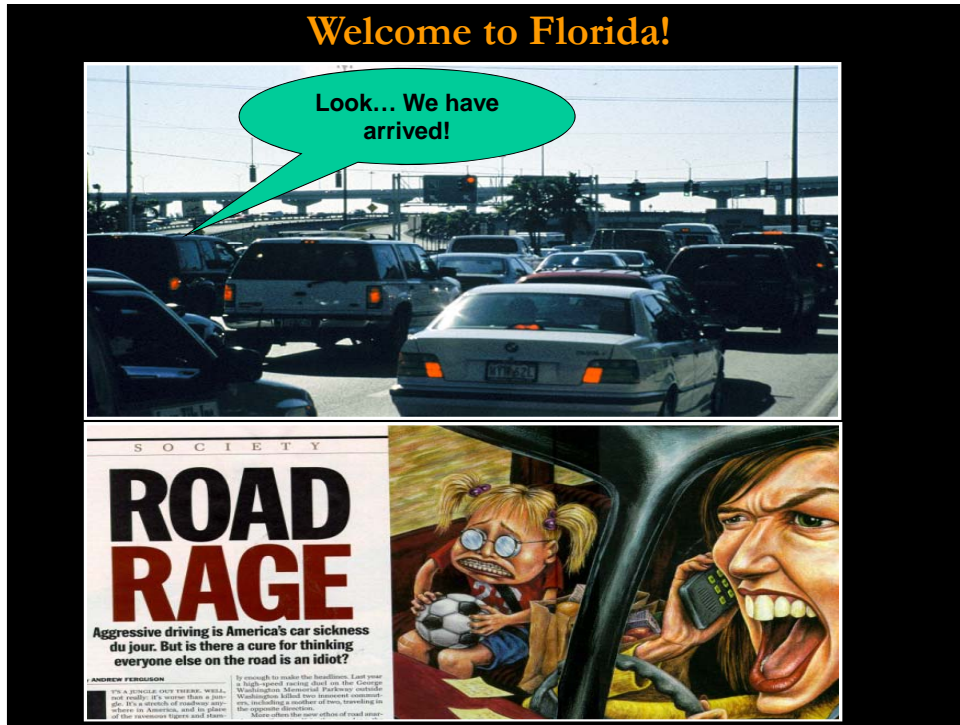


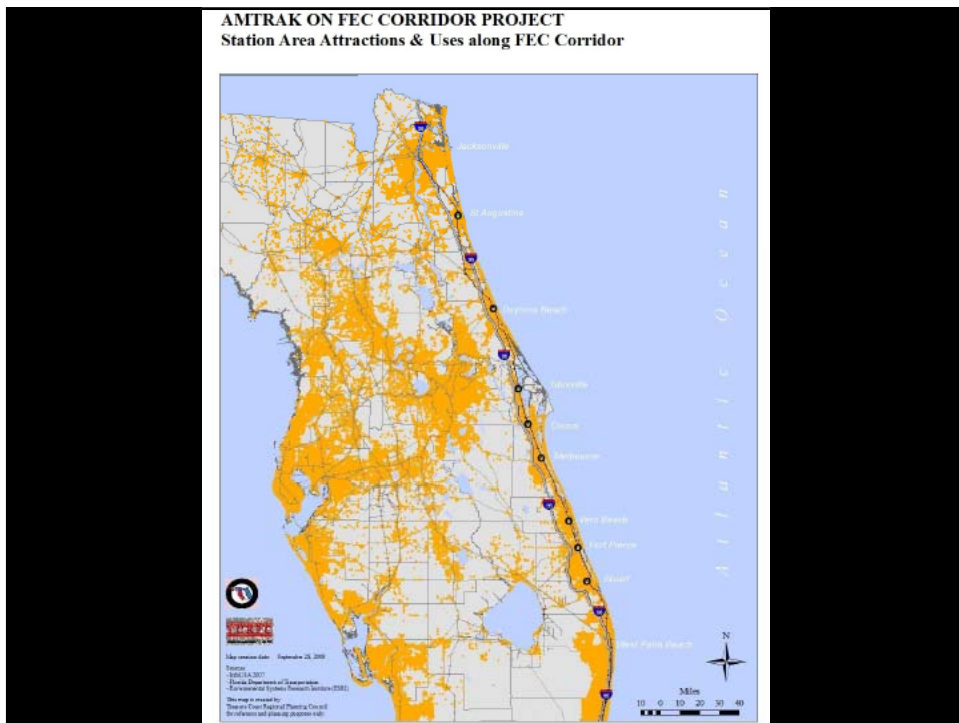
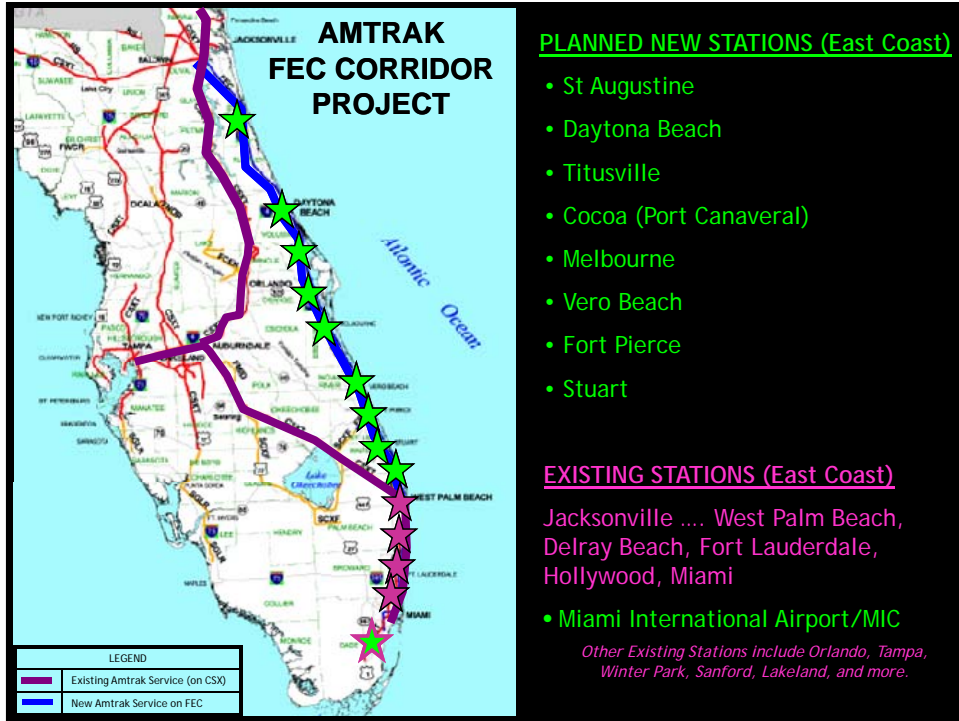
Henry Flagler

FEC/Henry Flagler *“Speedway to Sunshine”*









A Rich History along the Corridor



Recent “Inspection Train” (May 1, 2010)

- In coordination with FEC, Amtrak ran an “inspection train” on May 1, 2010
- Train departed Miami, stopped in West Palm Beach and each of the 8 cities on the corridor, ending in Jacksonville



Sample Station Location:
Daytona Beach



Daytona Beach Station
Magnolia Avenue
(South of ISB)



Daytona Beach Station
Magnolia Avenue
(South of ISB)



Daytona Beach Station
Magnolia Avenue
(South of ISB)



Daytona Beach Station



Daytona Beach Station



Station Planning along the Corridor



Station Planning along the Corridor



Proposed Schedule

FEC CORRIDOR SOUTHBOUND RUN TIME ASSUMPTIONS FOR SCHEDULE DEVELOPMENT
Based on FEC Rwy provided Speed Chart of 9/11/09 and Amtrak 'TPC' analysis of 10/15/09

FEC CORRIDOR STATIONS		SILVER STAR SOUTHBOUND	
		ELAPSED TIME	AVERAGE SPEED
JAX-Clifford Lane	Dp	0	-
ST. AUGUSTINE	Dp	0:39	55.2 mph
DAYTONA	Dp	1:33	65.2 mph
TITUSVILLE	Dp	2:18	59.6 mph
COCOA	Dp	2:37	54.9 mph
MELBOURNE	Dp	3:00	56.9 mph
VERO BEACH	Dp	3:35	57.7 mph
FT. PIERCE	Dp	3:51	55.0 mph
STUART	Dp	4:13	53.9 mph
PALM BCH GARDEN	PASS	4:38	62.6 mph
CSXT Connection	PASS	4:52	41.1 mph
WEST PALM BEACH	Dp	5:01	16.4 mph
DELRAY BEACH	Dp	5:20	54.2 mph
DEERFIELD BEACH	Dp	5:34	46.3 mph
FT. LAUDERDALE	Dp	5:51	48.7 mph
FT. LAUD. AIRPORT	PASS	5:57	40.0 mph
HOLLYWOOD	Dp	6:06	37.6 mph
MIAMI METRO	PASS	6:23	42.9 mph
MIAMI (MIC)	Ar	6:34	15.3 mph
SUMMARY		6:34	53.5 mph

80 mph Max, 4" Eu - 7 Amfleet, 1 P42

FEC CORRIDOR STATIONS		CORRIDOR TRAINS SOUTHBOUND	
		ELAPSED TIME	AVERAGE SPEED
JAX-Clifford Lane	Dp	0	-
ST. AUGUSTINE	Dp	0:37	58.2 mph
DAYTONA	Dp	1:28	69.0 mph
TITUSVILLE	Dp	2:10	63.9 mph
COCOA	Dp	2:28	57.9 mph
MELBOURNE	Dp	2:50	59.5 mph
VERO BEACH	Dp	3:22	63.1 mph
FT. PIERCE	Dp	3:37	58.6 mph
STUART	Dp	3:57	59.2 mph
PALM BCH GARDEN	Dp	4:22	62.6 mph
CSXT Connection	PASS	4:35	44.3 mph
WEST PALM BEACH	Dp	4:42	21.0 mph
DELRAY BEACH	Dp	5:00	57.3 mph
DEERFIELD BEACH	Dp	5:13	49.8 mph
FT. LAUDERDALE	Dp	5:33	59.2 mph
FT. LAUD. AIRPORT	Dp	5:37	40.0 mph
HOLLYWOOD	Dp	5:42	37.6 mph
MIAMI METRO	Dp	6:00	40.5 mph
MIAMI (MIC)	Ar	6:08	21.0 mph
SUMMARY		6:08	57.2 mph

60 mph Max, 4" Eu - 7 Amfleet, 1 P42

SOURCE: FDOT HSIPR Application (August 2010)

Jacksonville to Miami trip-time:
reduced from 10 hours to approx. 6 hours

Key Project Features

- Infrastructure Efficiency
 - Uses existing FEC Corridor
 - Reinforces redevelopment along east coast
- Expanded Regional Economy
 - Improved regional mobility
 - Creates more transportation choices
 - Day trips possible for business/tourist travel
- Energy Savings
 - Reduces carbon footprint
 - Promotes infill & redevelopment
 - Expands multi-modal transportation network



Next Steps

- \$118 Million in recommended FDOT work program
Project Cost Estimate (\$250M) ~ could be reduced
Other Federal funding sources to be sought
- Future HSIPR / Other Federal Funding Application?
Next Funding Cycle Possible Summer 2011
- FDOT Continues to Explore Opportunities for East Coast Passenger Service with Amtrak, FEC & Local Communities



