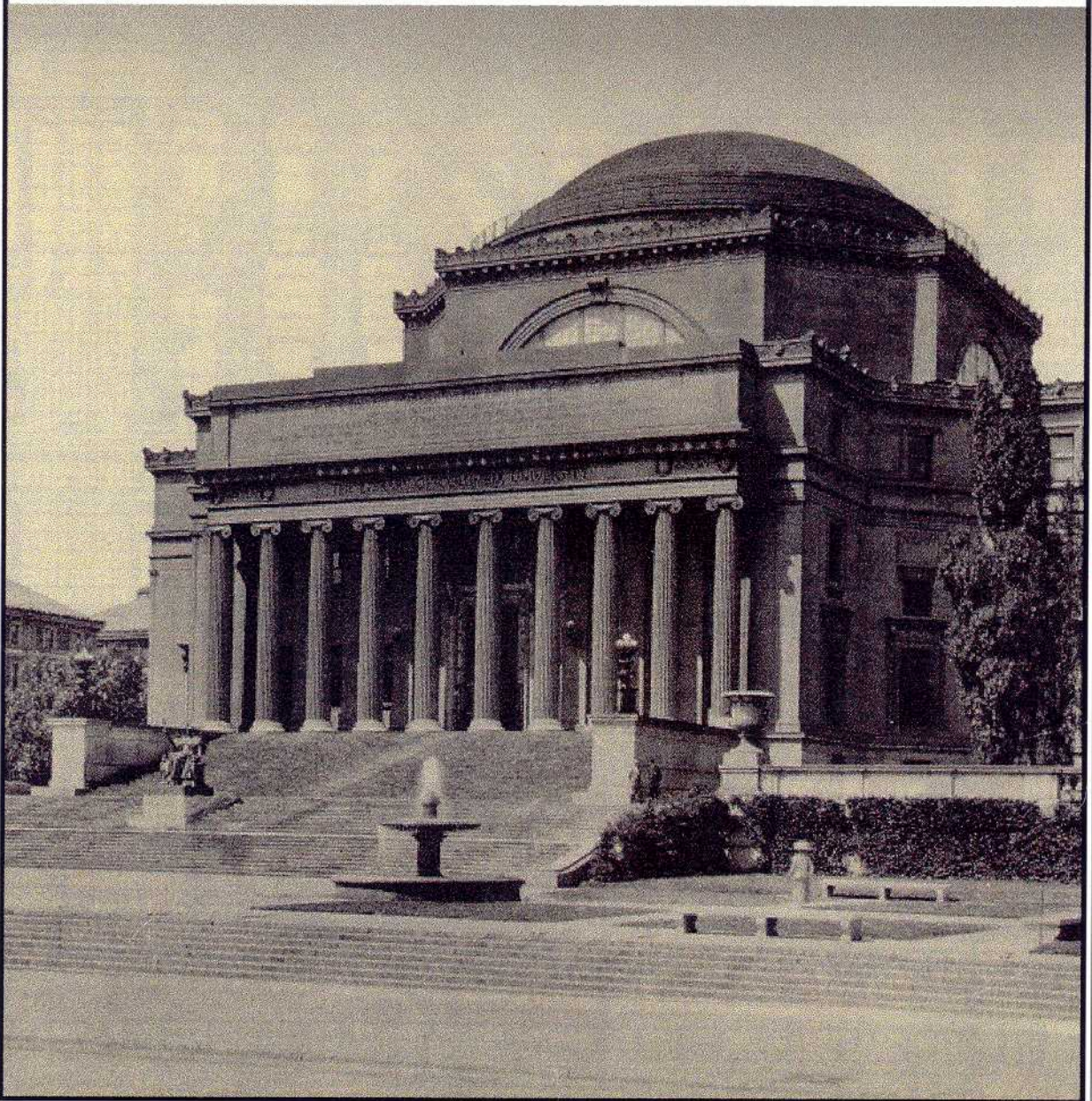


BIBLIOGRAPHY



BIBLIOGRAPHY

1. Future of the Region

Akin, E. *Flagler: Rockefeller Partner and Florida Baron*. Gainesville, Florida: University of Florida Press, 1991.

Alexander, C. Ishikawa, S. and Silverstein. *A Pattern Language: Towns, Buildings and Construction*. New York, New York: Oxford University Press, 1977.

American Institute of Architects. *Architectural Graphic Standards, Ninth Edition*. New York, New York: John Wiley and Sons, Inc., 1994.

Bank of America, California Resources Agency, Greenbelt Alliance, and the Low Income Housing Fund. *Beyond Sprawl: New Patterns of Growth to Fit the New California, Executive Summary*. San Francisco, California, 1994.

Blake, Nelson M. *Land into Water - Water into Land*. Tallahassee, Florida: University Presses of Florida, 1980.

Benevolo L. D. *The History of the City*. Cambridge, Massachusetts: The M.I.T. Press, 1988.

Burnham D. and Bennet E. *Plan of Chicago*. New York, New York: Princeton Architectural Press, 1993.

Bradbury, K. Downs, A. and Small K. *Urban Decline and the Future of American Cities*. Washington, D.C.: The Brookings Institution, 1982.

Dover, V. and Kohl, J. *The Relationship Between Land Use Planning and Transportation*. Miami, Florida, 1991.

Cerda I. *Teoria general de la urbanizacion*. Madrid, Spain: Instituto de Estudios Fiscales, 1968.

Downs, A. *Neighborhoods and Urban Development*. Washington, D.C.: The Brookings Institution, 1981.

Downs, A. *New Visions for Metropolitan American*. Washington, D.C. and Cambridge, Massachusetts: The Brookings Institution and the Lincoln Institute of Land Policy, 1994.

Downs, A. *Stuck in Traffic: Coping with Peak Hour Traffic Congestion*. Washington, D.C. and Cambridge, Massachusetts: The Brookings Institution and the Lincoln Institute of Land Policy, 1992.

- Duany, A. and Plater-Zyberk E. *Downtown Master Plan for the City of West Palm Beach*. Miami, FL, March 1994.
- Ewing, R. *Characteristics, Causes, and Effects of Sprawl*. A Literature Review. Ft. Lauderdale, Florida: Environmental and Urban Issues, FAU/FIU Joint Center, Winter 1993.
- Ewing, R. TDM. *Growth Management and the Other Four Out of Five Trips*. Ft. Lauderdale, Florida: Environmental and Urban Issues, FAU/FIU Joint Center, Spring 1993.
- Ewing, R. Heflin, C., Porter, D. *Quality Development Guideline: Doing the Right Thing and Making Money at the Same Time*. Tallahassee, Florida: Florida Department of Community Affairs and the Florida Energy Office, June 1994.
- Florida Department of Community Affairs. *Public Workshop Draft of the 1995 Florida State Land Development Plan*. Tallahassee, Florida, June 1995.
- Florida Department of Transportation. *Florida Transportation Plan*. Tallahassee, Florida, 1986.
- Florida Department of Transportation. *Operating Policies and Performance Measures*. Tallahassee, Florida, 1986.
- Florida's Governors Office. *Governor's Task Force on Urban Growth Patterns - Final Report*. Tallahassee, Florida, June 1989.
- Hoffstot, B. *Landmark Architecture of Palm Beach*. Pittsburgh, Pennsylvania: Pittsburgh History and Landmarks Foundation, 1991.
- Jacobs, J. *The Death and Life of Great American Cities*. New York, New York: Random House, 1961.
- Jones, J., Editor. *Authentic Small Houses of the Twenties*. New York, New York: Dover Publications, Inc., 1987 (reprint of original 1929 edition).
- Katz, P., Editor. *The New Urbanism: Toward an Architecture of Community*. New York, New York: McGraw Hill, Inc., 1994.
- Kasowski, K. *Suburban Sprawl*. Florida Planning, January 1995.
- Krier, L. *Architecture and Urban Design 1967-1992*. London, England: Academy Editions, 1992.

- Kostof, S. *The City Assembled: The Elements of Urban Form Through History*. Boston: Bulfinch Press, 1992.
- Kostof, S. *The City Shaped: Urban Patterns and Meanings Through History*. Boston: Bulfinch Press, 1991.
- Kulash, W., Anglin J. and Marks, D. *Traditional Neighborhood Development: Will the Traffic Work?* Orlando, Florida: Paper Prepared for the American Society of Civil Engineers, March 1990.
- Kunstler, J. *The Geograph of Nowhere: The Rise and Decline of America's Man-Made Landscape*. New York, New York: Simon and Schuster, 1993.
- Lejeune, J-F. Editor. *The New City, volume 1: Foundations*. Coral Gables, Florida: University of Miami, Fall 1991.
- Lejeune, J-F. Editor. *The New City, volume 2: The American City*. Coral Gables, Florida: University of Miami, Winter 1993-1994.
- Mumford, L. *The City in History*. Harcourt, Brace Jovanovich, Inc., 1961.
- Oppeland F., Meisel T Editors. *Tales of Old Florida*. Secacus, New Jersey: Castle a division of Book Sales Inc., 1987.
- New Jersey Office of State Planning. *The New Jersey State Development and Redevelopment Plan*. Trenton, New Jersey: New Jersey State Planning Commission, June 1992.
- Rights L. *A Portrait of St. Lucie County, Florida*. Virginia Beach, Virginia: The Donning Company, 1994.
- Treasure Coast Regional Planning Council. *Regional Comprehensive Policy Plan*. Palm City, Florida, April 1987.
- Treasure Coast Regional Planning Council. *City of Lake Worth Redevelopment and Revitalization Plan*. Palm City, Florida, June 1994.
- Treasure Coast Regional Planning Council. *Rural Town of White City Redevelopment and Revitalization Plan*. Palm City, Florida, October 1994.
- Treasure Coast Regional Planning Council. *City of Boynton Beach Redevelopment and Revitalization Plan*, Palm City, Florida, December 1994.
- Treasure Coast Regional Planning Council. *Town of Lake Park Redevelopment and Revitalization Plan*, Palm City, Florida, June 1994.

Treasure Coast Regional Planning Council. *South Martin County Charrette Report*. Palm City, Florida, March 1995.

Treasure Coast Regional Planning Council. *City of Fort Pierce Redevelopment and Revitalization Plan*, Palm City, Florida, March 1995.

Unwin R. *Town Planning in Practice*, New York, New York: Princeton Architectural Press, 1994

U.S. Department of Transportation. *A Guide to Land Use and Public Transportation - Final Report*. Washington, D.C.: U.S. Government Printing Office, December 1989.

U.S. Department of Transportation. *The New Suburb-Final Report*. Washington, D.C.: U.S. Government Printing Office, July 1991.

2. Affordable Housing

Advisory Commission on Regulatory Barriers to Affordable Housing. *“Not in My Backyard”*. Washington, D.C.: Report to President Bush and Secretary Kemp, July 1991.

Affordable Housing Study Commission, State of Florida. *“Bringing the Pieces Together”*. Final Report. Tallahassee, Florida, December 1994.

Andrew, Christine I. and Merriam, Dwight H. *“Defensible Linkage”*. Chicago, Illinois: APA Journal, Spring, 1988.

Area Agency on Aging. *“All About Aging”*. Palm Beach Gardens, Florida: Newsletter, Spring, 1995.

Center for Urban Policy and Research. *“Banking on the Community Makes Sense”*. Piscataway, New Jersey: CUPR, 1995.

Dade County. *“Documentary Surtax Homeownership Loan Program”*. Miami, Florida.

Dolbeare, Cushing N. *Out of Reach - Why Everyday People Can't Find Affordable Housing*. Washington, D.C.: Low-Income Housing Information Service, September 1991.

Eggert, Carolyn, Chairman of Indian River County Affordable Housing Task Force. Personal Correspondence, March 27, 1995.

Florida Department of Community Affairs. *Florida Land Plan: “The State Land Development Plan”*. Revised public workshop draft. Tallahassee, Florida, June 1995.

Florida Home Builders Association, *“William E. Sadowski Affordable Housing Act - Understanding the Law”*. Governmental Affairs Department, Florida Home Builders Association, July 22, 1992.

Florida Housing Finance Agency. *“A Guide to the State Housing Initiative Partnership (SHIP) Program”*. Tallahassee, Florida: Brochure, Florida Housing Finance Agency, November 1992.

Jackson, Kenneth T. *How Washington Changed the American Housing Market. Crabgrass Frontier: The Suburbanization of the United States, Chapter 11, Federal Subsidy and the American Dream.*, Oxford Press, 1985.

- Kandell, Marshall. *"Public Housing: The Ostrich Strategy"*. Chicago, Illinois: Planning, June 1995.
- Keen, Cathy. *"Affording the American Dream"*. Gainesville, Florida: Today, April 1992.
- Martin County. *"SHIP" News Flash*". Stuart, Florida: Martin County Board of Commissioners, March 1995.
- Murphy, Dennis. *Personal Correspondence*. St. Lucie County Community Development Department, May 12, 1995.
- National Association of Home Builders. *News Release*. March 21, 1995.
- Office of Rural Health. *Migrant Farm Labor Housing*. Tallahassee, Florida: Southeast Florida Survey Report, State of Florida, 1994.
- Roberts, Coleen and Van Vonno, Nikki. *Personal Correspondence*. Martin County Growth Management Department, May 9, 1995.
- Rohani, Susan. *Personal Correspondence*. Indian River County, Planning and Zoning Department, June 12, 1995.
- Rosen David. *"Housing Trust Funds"*. Chicago, Illinois: Planning Advisory Service Report Number 406, American Planning Association, December, 1987.
- Ross, Jaime. *"The William E. Sadowski, Affordable Housing Act"*. *Environmental and Urban Issues*. FAU/FIU Joint Center, Fall 1992.
- Ross, Jaime. *"Full Funding for Sadowski, Act: A Magnificent Achievement"*. Tallahassee, FL: Housing News Network, Florida Housing Coalition, Inc., March-April, 1995.
- Sanders, Getzels, Mosena and Butler. *"Affordable Single Family Housing"*. Chicago, ILL: Planning Advisory Service Report Number 385, American Planning Association, August 1984.
- Shimburg Center for Affordable Housing. *"Affordable Housing Issues"*. Gainesville, Florida: College of Architecture, University of Florida, December 28, 1992 and April, 1995 issues.
- South Florida Regional Planning Council. *"Strategic Regional Policy Plan"*. Hollywood, Florida: Final Draft, July 1995.
- Taylor, Chauncey, II. *Personal Correspondence*. Palm Beach County Department of Housing and Community Development, May 11, 1995.

- The Affordable Housing Study Commission. *Bringing the Pieces Together*. Tallahassee, FL: Final Report, State of Florida, December 1994.
- Treasure Coast Regional Planning Council. *"Evaluation and Appraisal Report."* Palm City, Florida, 1990.
- Treasure Coast Regional Planning Council. *"Analysis of Affordable Housing for Various Income Groups by Various Areas"*. Palm City, Florida: Unpublished Paper, August 1992.
- Treasure Coast Regional Planning Council. *"Value of Selected Housing Units": A Graphic Comparison of Various Communities*. Palm City, Florida: Unpublished Paper, August, 1992.
- Treasure Coast Regional Planning Council. *"Interviews for the Strategic Regional Policy Plan"*. Palm City, Florida: Unpublished Paper, February, 1995.
- Wentling, James W. *"A Simple Formula for Producing Affordable Detached Housing"*. Urban Land, May 1990.

3. Economic Development

Area Agency on Aging of Palm Beach/Treasure Coast, Inc. *Personal Correspondence*. Palm Beach Gardens, Florida, 1995.

Area Agency on Aging of Palm Beach/Treasure Coast, Inc. *1995-98 Area Plan for the Area Agency on Aging of Palm Beach/Treasure Coast, Inc.* Palm Beach Gardens, Florida.

Brabec, Elizabeth. *SCENIC AMERICA, On The Value of Open Spaces*. Vol. 1, No. 2. Washington, D.C.: Land Ethics, 1992.

Bureau of Economic & Business Research. *Florida County Rankings, 1994*. Gainesville, Florida: University of Florida Press, 1995.

Bureau of Economic & Business Research. *Palm Beach County Perspective 1994*. Gainesville, Florida: University of Florida Press, 1995.

Bureau of Economic & Business Research. *Indian River County Perspective 1994*. Gainesville, Florida: University of Florida Press, 1995.

Bureau of Economic & Business Research. *Martin County Perspective 1994*. Gainesville, Florida: University of Florida Press, 1995.

Bureau of Economic & Business Research. *St. Lucie County Perspective 1994*. Gainesville, Florida: University of Florida Press, 1995.

Bureau of Economic and Business Research. *Florida Statistic Abstract*. Gainesville, Florida: University Press, 1950, 1975, 1980, 1985, 1990, 1994.

Bureau of Economic and Business Research. *1980 Census Handbook: Florida Counties*. Gainesville, Florida, 1984.

Florida Department of Commerce. *Florida And The Other Forty-Nine 1994*. Tallahassee, Florida, 1995.

Florida Department of Commerce. *Florida County Comparisons 1992, 1994*. Tallahassee, Florida, 1994, 1995.

Florida Department of Commerce. *Florida Facts Bulletins*. Tallahassee, Florida, 1993, 1994, 1995.

Florida Department of Commerce. *Florida Visitors Report 1993*. Tallahassee, Florida, 1995.

- Florida Department of Labor and Employment Security. *Florida Labor Market Trends Report*. Tallahassee, Florida: November, December 1994; January, February, March 1995.
- Florida State University. *Florida County Atlas and Municipal Fact Book*. Gainesville, Florida, 1994.
- Fremn Suzanne Fremn & Morrow Wilson, *Rural America*, The Reference Shelf, Vol. 48, No. 3, New York, New York, 1976.
- Indian River Board of County Commissioners. *Indian River County Economic Development Strategy Plan*, Vero Beach, Florida, 1995.
- Institute of Science and Public Affairs. *Florida County Atlas and Municipal Fact Book*. Tallahassee, Florida, 1994.
- McIver, Stuart. *Glimpses of South Florida History*. Tallahassee, Florida, 1988.
- McNeill, William & Adams, Ruth S. *Human Migration, Patterns & Policies*, Indiana University Press, Bloomington, Indiana, 1978.
- Miller, Stephen. *The Economic Benefits of Open Space*. Portland, Maine: The Nature Conservancy, 1992.
- National Park Service. *Economic Impacts of Protecting Rivers, Trails, and Greenway Corridors: A Resource Book*. Washington, D.C.: Government Printing Office, 1990.
- National Trust for Historic Preservation.. *The Economics of Historic Preservation*. Washington, D.C., 1994.
- National Trust for Historic Preservation.. *The Economics of Rehabilitation*. Washington, D.C., Information Series No. 53, 1991.
- Nelson, Arthur. *Why Conservatives Should Like Growth Management*. Tallahassee, Florida: Foresight Vol. 7, No. I, 1000 Friends of Florida, Winter 1994.
- Office of Research and Reports. *1994 Profile Martin County*. Fort Pierce, Florida: Indian River Community College, 1995.
- Palm Beach County Board of County Commissioners. 1980-1990. *Demographic and Soci-Economic Profile of Palm Beach County*. West Palm Beach, Florida, March 1993.
- Palm Beach County Board of County Commissioners. *Overall Economic Development Program of Palm Beach County*, West Palm Beach, Florida, June 1993.

- Rigsby, David. *The Importance of Downtowns*. Tallahassee, Florida: Florida League of Cities Magazine, February 1995.
- St. Lucie County Community Development Department. *Economic Activities in St. Lucie County, 1980-1993*. Fort Pierce, Florida, July 1994.
- Sunbelt Research Associates, Inc. *Report of Tourism for Palm Beach County, December 1992, 1993, 1994*. Jupiter, Florida, 1994, 1995.
- Thomas, Holly. *The Economic Benefits of Land Conservation. Technical Memorandum*. Poughkeepsie, New York: Dutchess County Planning Department, February 1991.
- Treasure Coast Health Council. *Personal Correspondence*. West Palm Beach, Florida, June 1995.
- Treasure Coast Regional Planning Council. *Regional Description*. Palm City, Florida, 1985.
- Treasure Coast Regional Planning Council. *Regional Profile June 1979*. Palm City, Florida, 1980.
- Treasure Coast Regional Planning Council. *Regional Comprehensive Policy Plan*. Palm City, Florida, April 1987.
- U.S. Department of Commerce. *1980 Census of Population, General Population Characteristics, Section 1, 2*. Washington, D.C.: U.S. Government Printing Office.
- U.S. Department of Commerce. *1990 Census of Population, General Population Characteristics, Section 1, 2*. Washington, D.C.: U.S. Government Printing Office.
- U.S. Department of Commerce. *County Business Patterns 1990, Florida*. Washington D.C.: U.S. Government Printing Office, 1992.
- U.S. Department of Commerce. *1990 Census of Population, Social and Economic Characteristics, Sections 1, 2, 3*. Washington, D.C.: U.S. Government Printing Office.

4. Education

Biddix, Lois D. *The Role of School Size*. Palm Beach County School District.

Cetron, Marvin. *Schools of the Future: How American Business and Education Can Cooperate to Save Our Schools*. McGraw-Hill. New York, 1985.

Cook, Jr. Ph.D., William J. *Bill Cook's Strategic Planning for America's Schools*. Montgomery, Alabama: Cambridge Management Group, 1988.

Florida Department of Education. *Educational Plant Survey, St. Lucie County Schools*. Tallahassee, Florida, 1992.

Florida Department of Education. *Educational Plant Survey, Indian River County Schools*. Tallahassee, Florida, 1994.

Florida Department of Education. *Educational Plant Survey, Martin County Schools*. Tallahassee, Florida, 1995.

Florida Department of Education. *Educational Plant Survey, Palm Beach County Schools*. Tallahassee, Florida, 1991.

Florida Department of Education. *Profile XV, Profiles of Florida School Districts*. Tallahassee, Florida, 1986.

Florida Department of Education. *Profiles of Florida School Districts 1993-94, Student and Staff Data*. Tallahassee, Florida, 1995.

Ravitch, Diane. *The Schools We Deserve, Reflections on the Educational Crisis of Our Times*. New York, New York: Basic Books, 1985.

Schlechty, Philip C. *Schools for the 21st Century*. San Francisco, California: Jossey-Bass, 1990.

5. Emergency Preparedness

Bureau of Economic Analysis, Office of Tourism Research. *Florida Visitor Study, 1993: Executive Summary*. Tallahassee, Florida: Florida Department of Commerce, 1993.

Bureau of Economic and Business Research. *Florida County Rankings, 1994*. Gainesville, Florida: University of Florida, 1995.

Dr. Robert C. Sheets. *The United States Hurricane Problem: An Assessment for the 1990s*. Miami, Florida: National Hurricane Center, 1993.

Economics and Statistics Administration, Bureau of the Census. *County and City Data Book, 1994*. Washington, D.C.: U.S. Department of Commerce, 1994.

FEMA. *Inter-agency Hazard Mitigation Team Report*. Washington, D.C.: FEMA 955-DR-FL (Hurricane Andrew), 1992.

Florida Department of Community Affairs. *1995 Florida Land Plan: the State Land Development Plan*. Tallahassee, Florida: State of Florida, 1995.

Florida Department of Community Affairs. *Florida Radiological Emergency Management Plan for Nuclear Power Plants*. Tallahassee, Florida: State of Florida, 1995.

Florida Department of Community Affairs. *State of Florida Hazard Mitigation Plan*. Tallahassee, Florida: State of Florida, 1994.

Florida Department of Community Affairs. *State of Florida Strategic Plan*. Tallahassee, Florida: State of Florida, 1995.

Florida District X Local Emergency Planning Committee (LEPC). *District X LEPC Emergency Plan for Hazardous Materials*. Palm City, Florida: Treasure Coast Region, 1995.

Florida Division of Emergency Management. *State Emergency Response Commission (SERC) Hazardous Materials Incidents Analysis, 1994*. Tallahassee, Florida: State of Florida, 1994.

Institute of Science and Public Affairs. *Florida County Atlas and Municipal Facts Book*. Tallahassee, Florida: Florida State University, 1994.

Myers, Joseph F. *The History of Emergency Management*. Tallahassee, Florida: Florida Division of Emergency Management, 1995.

Personal interviews with Indian River, Martin, Palm Beach, and St. Lucie County emergency management officials and staffs.

TRANSCAER Task Group. *TRANSCAER Guidance Manual: An Industry Commitment to Public Safety*. Washington, D.C.: Chemical Manufacturers Association, 1991.

Treasure Coast Regional Planning Council. *Treasure Coast Region Natural Disaster Shelter Survey*. Palm City, Florida: Treasure Coast Region, 1991.

U.S. Army Corps of Engineers; Federal Emergency Management Agency (FEMA); National Oceanographic and Atmospheric Administration (NOAA); Florida Division of Emergency Management. *Treasure Coast Regional Hurricane Evacuation Study; Technical Data Report*. Jacksonville, Florida, 1994.

6. Natural Resources of Regional Significance

Cowardin, L.M., V. Carter, F.C. Golett, and E.T. LaRoe. *Classification of Wetlands and Deepwater Habitats of the United States*. Washington, D.C.: U.S. Fish and Wildlife Service, 1979.

Cox, J., D. Inkley, and R. Kautz. *Ecology and Habitat Protection Needs of Gopher Tortoise (*Gopherus polyphemus*) Populations Found on Lands Slated for Large-scale Development in Florida*. Tallahassee: Florida Game and Fresh Water Fish Commission, Nongame Wildlife Program Technical Report No. 4, 1987.

Cox, J., R. Kautz, M. MacLaughlin, and T. Gilbert. *Closing the Gaps in Florida's Wildlife Habitat Conservation System*. Tallahassee: Florida Game and Fresh Water Fish Commission, 1994.

Dames and Moore in conjunction with Palm Beach County Department of Environmental Resources Management. *Lake Worth Lagoon Natural Resources Inventory and Resource Enhancement Study*. West Palm Beach: Palm Beach County, 1990.

Fernald E.A. and D.J. Patton (Eds.). *Water Resources Atlas of Florida*. Tallahassee: Florida State University, 1984.

Fernald, R.T. *Coastal Xeric Scrub Communities of the Treasure Coast Region, Florida: A Summary of Their Distribution and Ecology, with Guidelines for Their Preservation and Management*. Tallahassee: Florida Game and Fresh Water Fish Commission, Nongame Wildlife Program Technical Report No. 6, 1989..

Fitzpatrick, J.W., G.E. Woolfenden, and M.T. Kopeny. *Ecology and Development-related Habitat Requirements of the Florida Scrub Jay (*Aphelocoma coerulescens*)*. Tallahassee: Florida Game and Fresh Water Fish Commission, Nongame Wildlife Program Technical Report No. 8, 1991.

Florida Department of Environmental Protection. *Ecosystem Management Implementation Strategy Action Plan*. Tallahassee: Florida Department of Environmental Protection, 1995.

Florida Department of Natural Resources. *Indian River Lagoon Aquatic Preserve Management Plan (Vero Beach to Fort Pierce and Jensen Beach to Jupiter Inlet)*. Tallahassee: Florida Department of Natural Resources, 1989.

Florida Department of Natural Resources. *Indian River Lagoon Spoil Island Management Plan*. Tallahassee: Florida Department of Natural Resources, 1990.

- Florida Natural Areas Inventory and Florida Department of Natural Resources. *Guide to the Natural Communities of Florida*. Tallahassee: Florida Natural Areas Inventory, 1990.
- Franz, R. (Ed.). *Rare and Endangered Biota of Florida: Volume 6, Invertebrates*. Gainesville: University Presses of Florida, 1982.
- Gilbert, C. R. (Ed.). *Rare and Endangered Biota of Florida: Volume II, Fishes*. Gainesville: University Press of Florida, 1992.
- Graves, G.A. and D. G. Strom. *Trends in Savannas State Reserve Water Quality*. Port St. Lucie: Florida Department of Environmental Protection, 1995.
- Humphrey, S. R. (Ed.). *Rare and Endangered Biota of Florida: Volume I Mammals*. Gainesville: University Press of Florida, 1992.
- Kale, H. W., II (Ed.). *Rare and Endangered Biota of Florida: Volume 2, Birds*. Gainesville: University Presses of Florida, 1978.
- Loxahatchee Greenways Natural Resources Task Force. *Loxahatchee Greenways Natural Resources Assessment Interim Report to the Florida Greenways Commission*. Palm Beach Gardens: The Conservation Fund, 1994.
- Moler, P. E. (Ed.). *Rare and Endangered Biota of Florida: Volume III, Amphibians and Reptiles*. Gainesville: University Press of Florida, 1992.
- Palm Beach County Department of Environmental Resources Management. *Palm Beach County, Florida Estuarine Natural Resources Inventory and Resources Enhancement Study*. West Palm Beach: Palm Beach County, 1992.
- South Florida Water Management District. *Surface Water Improvement and Management Plan for the Everglades*. West Palm Beach: South Florida Water Management District, 1992.
- South Florida Water Management District. *Surface Water Improvement and Management (SWIM) Plan Update for Lake Okeechobee*. West Palm Beach: South Florida Water Management District, 1993.
- South Florida Water Management District. *Surface Water Improvement and Management (SWIM) Plan for the Indian River Lagoon*. West Palm Beach: South Florida Water Management District, 1994.
- South Florida Water Management District. *District Water Management Plan*. West Palm Beach: South Florida Water Management District, 1995.

- South Florida Water Management District. *Lower East Coast Regional Water Supply Plan (Revised Draft Preview Document)*. West Palm Beach: South Florida Water Management District, 1995.
- South Florida Water Management District. *Save Our Rivers, 1995 Five Year Plan*. West Palm Beach: South Florida Water Management District, 1995.
- U.S. Army Corps of Engineers. *Fort Pierce Harbor, Florida General Reevaluation Report and Supplement to the Final Environmental Impact Statement*. Jacksonville: U.S. Army Corps of Engineers, 1994.
- U.S. Department of Agriculture Soil Conservation Service. *Soil Survey of Palm Beach County Area, Florida*. Washington, D.C.: National Cooperative Soil Survey, U.S. Department of Agriculture, 1978.
- U.S. Department of Agriculture Soil Conservation Service. *Soil Survey of St. Lucie County Area, Florida*. Washington, D.C.: National Cooperative Soil Survey, U.S. Department of Agriculture, 1980.
- U.S. Department of Agriculture Soil Conservation Service. *Soil Survey of Martin County Area, Florida*. Washington, D.C.: National Cooperative Soil Survey, U.S. Department of Agriculture, 1981.
- U.S. Department of Agriculture Soil Conservation Service. *Soil Survey of Indian River County Area, Florida*. Washington, D.C.: National Cooperative Soil Survey, U.S. Department of Agriculture, 1987.
- Ward, D. B. (Ed.). *Rare and Endangered Biota of Florida: Volume 5, Plants*. Gainesville: University Presses of Florida, 1979.
- Wood, D.A. *Official Lists of Endangered and Potentially Endangered Fauna and Flora in Florida*. Tallahassee: Florida Game and Fresh Water Fish Commission, 1994.
- Woodward-Clyde Consultants. *Indian River Lagoon - A Fragile Balance of Man and Nature*. Melbourne: Indian River Lagoon National Estuary Program, 1995b.
- Woodward-Clyde Consultants. *The Indian River Lagoon Restoration Plan, the Comprehensive Conservation and Management Plan for the Indian River Lagoon System*. Melbourne: Indian River Lagoon National Estuary Program, 1995.

7. Regional Transportation

Alexander, C. Ishikawa, S. and Silverstein. *A Pattern Language: Towns, Buildings and Construction*. New York, New York: Oxford University Press, 1977.

Allan, J. *Public-Private Joint Development at Rapid Transit Stations*. Westport, Connecticut: Transportation Quarterly, Vol. 40, No. 3, 1986.

American Automobile Association. *Your Driving Costs*. Heathrow, Florida, 1995 Edition.

American Farmland Trust. *The Cost of Community Services in Madison Village and Township Lake County, Ohio*. Painsville, Ohio: Lake County Soil and Water Conservation District, October 1993.

Arnold, H. *Trees in Urban Design*. New York, New York: Van Nostrand Reinhold, 1992.

Auer, J. *The Mayor Who Preaches Design*. Stamford, Connecticut: Progressive Architecture, May 1995.

Bank of America, California Resources Agency, Greenbelt Alliance, and the Low Income Housing Fund. *Beyond Sprawl: New Patterns of Growth to Fit the New California, Executive Summary*. San Francisco, California, 1994.

Blucher, W. Moving People -- *Planning Aspects of Urban Traffic Problems*, Norfolk, Virginia: Virginia Law Review, Vol. 36, November 1950.

Bradbury, K. Downs, A. and Small K. *Urban Decline and the Future of American Cities*. Washington, D.C.: The Brookings Institution, 1982.

Burchell, R. *Impact Assessment of The New Jersey Interim State Development and Redevelopment Plan*. Trenton, New Jersey: New Jersey State Planning Commission, February 1992.

Bureau of Business and Economic Research. *1994 Florida Statistical Abstract*. Gainesville, Florida: University of Florida Press, 1994.

Bureau of Business and Economic Research. *Population projections by Age, Sex, and Race for Florida and its Counties, 1990 - 2010*. Gainesville, Florida: University of Florida Press, September 1991.

Center for Urban Transportation Research. *Moving People in Florida: Transit, TDM, and Congestion*. Tampa, Florida: University of South Florida, May 1994.

- Center for Urban Transportation Research. CUTR lines "*Innovations in Transportation*". Vol. 5, No. 3. Tampa, Florida, Winter 1994.
- Center for Urban Transportation Research. *Demographic Trends and Commuting in Florida*. University of South Florida, February 1994.
- Center for Urban Transportation Research. *Florida Demographics and Journey to Work: A County Data Book*. University of South Florida, May 1993.
- Cervero, R. *Urban Transit in Canada: Integration and Innovation At Its Best*. Westport, Connecticut: Transportation Quarterly, Vol. 40, No. 3, 1986.
- Chellman, C. *A Discussion of Street Geometry and Design Criteria for Traditional Neighborhood Development*. Ossipee, New Hampshire: White Mountain Survey Co, 1988.
- CH2M Hill. *Port of Ft. Pierce Master Development Plan*. Ft. Pierce, Florida: Ft. Pierce Port and Airport Authority, September 1986.
- Dover, V. and Kohl, J. *The Relationship Between Land Use Planning and Transportation*. Miami, Florida, 1991.
- Downs, A. *Neighborhoods and Urban Development*. Washington, D.C.: The Brookings Institution, 1981.
- Downs, A. *New Visions for Metropolitan American*. Washington, D.C. and Cambridge, Massachusetts: The Brookings Institution and the Lincoln Institute of Land Policy, 1994.
- Downs, A. *Stuck in Traffic: Coping with Peak Hour Traffic Congestion*. Washington, D.C. and Cambridge, Massachusetts: The Brookings Institution and the Lincoln Institute of Land Policy, 1992.
- Downs, A. and Bradbury, K. *Energy Costs, Urban Development and Housing*. Washington, D.C.: The Brookings Institution, 1984.
- Duncan, J. *The Search for Efficient Urban Growth Patterns: A Study of the Fiscal Impacts of Development in Florida*. Tallahassee, Florida: The Governor's Task Force on Urban Growth Patterns, July 1989.
- Engwicht, David. *Reclaiming Our Cities and Towns: Better Living with Less Traffic*. Philadelphia, Pennsylvania: New Society Publishers, 1993.
- Evans, L. *Traffic Safety and the Driver*. New York, New York: Van Nostrand Reinhold, 1992.

- Ewing, R. *Characteristics, Causes, and Effects of Sprawl: A Literature Review*. Ft. Lauderdale, Florida: Environmental and Urban Issues, FAU/FIU Joint Center, Winter 1993.
- Ewing, R. TDM, *Growth Management and the Other Four Out of Five Trips*. Fort Lauderdale, Florida: Environmental and Urban Issues, FAU/FIU Joint Center, Spring 1993.
- Ewing, R. Heflin, C., Porter, D. *Quality Development Guideline: Doing the Right Thing and Making Money at the Same Time*. Tallahassee, Florida: Florida Department of Community Affairs and the Florida Energy Office, June 1994.
- Florida Department of Community Affairs. *Public Workshop Draft of the 1995 Florida State Land Development Plan*. Tallahassee, Florida: June 1995.
- Florida Department of Transportation, *1994 Transportation Costs*. Tallahassee, Florida, January 1995.
- Florida Department of Transportation and Federal Aviation Administration, *Florida's Airports: The Florida Aviation Systems Plan: Technical Supplement 1989-2005*. Tallahassee, Florida: June 1989.
- Florida Department of Transportation. *Florida Commission for the Transportation Disadvantaged: Statewide Operations Report 1993-1994*. Tallahassee, Florida, May 1995.
- Florida Department of Transportation. *Florida Transportation Plan - Draft*. Tallahassee, Florida, 1986.
- Florida Department of Transportation. *2020 Florida Transportation Plan*. Tallahassee, Florida, March 1995.
- Florida Department of Transportation. *Florida Rail System Plan*. Tallahassee, Florida, March 1995.
- Florida Department of Transportation. *Operating Policies and Performance Measures*. Tallahassee, Florida, 1986.
- Florida's Governors Office, *Governor's Task Force on Urban Growth Patterns - Final Report*. Tallahassee, Florida, June 1989.
- Fulton, W. *Winning Over the Street People*. Washington, D.C.: American Planning Association, May 1991.
- Greene, D. *Transportation and Energy*. Vol. 48, No. 1. Landsdowne, Virginia: Transportation Quarterly, Winter 1994, Eno Transportation Foundation Inc.

- Holden, A. *Lighting the Night: Technology Urban Life and the Evolution of Streetlighting*. Places, Vol. 8, No. Z. Brooklyn, New York, 1992.
- Illinois Regional Transportation Authority. *The Routes to Future Growth: Fostering Transit Oriented Development in Northeastern Illinois*. Chicago, Illinois, February 1995.
- Indian River County Board of County Commissioners, *Indian River County Comprehensive Plan*. Vero Beach, Florida, 1990.
- Jacobs, A. *Great Streets*. Cambridge, Massachusetts: MIT Press, 1993.
- Jacobs E. and Shipps, S. *How Family Spending Has Changed in the U.S.* Washington, D.C.: Monthly Labor Review, U.S. Department of Labor, March 1990.
- Jacobs, J. *The Death and Life of Great American Cities*. New York, New York: Random House, 1961.
- Kasowski, K. *Suburban Sprawl*. Florida Planning, January 1995.
- Knoflacher, H. *Pedestrianization*. Wien, Germany: TRB Journal Technical University, April 1995.
- Kohr, L. *The Inner City: From Mud to Marble*. Wales, United Kingdom: Y. Lofa 1989.
- Kulash, W., Anglin J. and Marks, D. *Traditional Neighborhood Development: Will the Traffic Work?* Orlando, Florida: Paper Prepared for the American Society of Civil Engineers, March 1990.
- Lincoln Institute of Land Policy. *Restructuring Our Car-Crazy Society: A "Mission Impossible?"* Vol. 6, No. 2. Cambridge, Massachusetts: Landlines, March 1994.
- Lisokin, D. *Living Cities*. New York, New York: Priority Press Publications 1985.
- Lowe, M. *Back on Track: The Global Rail Revival*. Washington, D.C.: Worldwatch Institute, Worldwatch Paper 118, April 1995.
- Mackenzie, J., Dower R. and Cher, D. *The Going Rate: What it Really Costs to Drive*. Washington, D.C.: World Resources Institute, June 1992.
- Martin County Board of County Commissioners. *Martin County Comprehensive Plan*, West Palm Beach, Florida, 1990.

- Mumford, L. *The City in History*. Harcourt, Brace Jovanovich, Inc., 1961.
- Nelson, A. *Why Conservatives Should Like Growth Management, Foresight 1000 Friends of Florida*. Vol. 7, No. 1. Tallahassee, Florida, Winter, 1994.
- New Jersey Office of State Planning. *The New Jersey State Development and Redevelopment Plan*. Trenton, New Jersey: New Jersey State Planning Commission, June 1992.
- Newman, P. and Kenworth J. *Cities and Auto Dependence: A Source Book*. Brookfield, Vermont: Gower Technical, 1991.
- Owen, Wilfred. *The Metropolitan Transportation Problem*. Garden City, New York: Doubleday and Company, Inc., 1956.
- Palm Beach County Board of County Commissioners. *Palm Beach County Comprehensive Plan*. West Palm Beach, Florida, 1989.
- Palm Beach County Board of County Commissioners. *Report from the Independent Five-Year Road Program Oversight and Advisory Council*. West Palm Beach, Florida, November 30, 1992.
- Palm Beach County. Documents entitled: *PBIA Traffic Report, December 31, 1984, and PBIA Traffic Report, December 31, 1994*. Received June 20, 1995.
- Plous, F. *Off the Road, Vehicles*. Washington, D.C.: American Planning Association, Planning, September 1994
- Real Estate Research Corporation. *The Costs of Sprawl*. Washington, D.C.: U.S. Government Printing Office, April 1974.
- Rifkin J. and Howard, T. *Entropy: A New World View*. New York, New York: Viking Press 1980.
- Sereca J. and Taussig, M. *Environmental Economics*, Second Edition. Englewoods Cliff, New Jersey: Prentice Hall, Inc. , 1979.
- Smith de Haven, L. *South Florida 2025: Public Opinion Toward Regionalism*. Tallahassee, Florida: Florida State University, 1995.
- So, F. and Getzels, J. *The Practice of Local Government Planning* Second Edition. Washington, D.C: ICMA, 1988.
- South Florida Regional Planning Council. *Strategic Regional Policy Plan*. Ft. Lauderdale, May 1995 Draft.

- St. Lucie County Board of County Commissioners. *St. Lucie County Comprehensive Plan*. Ft. Pierce, Florida: 1989.
- St. Lucie County Port and Airport Authority. *Document entitled: Port of Fort Pierce Imports and Exports (1985-1995)*. Received June 20, 1995.
- Surface Transportation Policy Project. *Intermodalism--Not Just a List of Hype*. Vol. V, No. 3. Washington, D.C., April, 1995.
- Surface Transportation Policy Project. *Its the Economy Stupid!* Vol. IV, No. 8. Washington, D.C., October 1994.
- Surface Transportation Policy Project, *Transit Versus Highway Spending*. Vol. IV, No. 8. Washington, D.C., October 1994.
- Tampa Bay Regional Planning Council. *Draft Strategic Regional Policy Plan*. Clearwater, Florida, June 1995.
- The Editors of Fortune Magazine. *The Exploding Metropolis: A Study on the Assault on Urbanism and How Our Cities Can Resist It*. Garden City, New York: Doubleday and Company 1958.
- Todd, K. *A History of Roundabouts in the United States and France!* Vol. 42, No. 4. Westport, Connecticut: Transportation Quarterly, Transportation Foundation, Inc., October 1988.
- Treasure Coast Regional Planning Council. *Regional Comprehensive Policy Plan*. Palm City, Florida: April 1987.
- Tung, G. *Streetlights and Civic Imagery Places*, Vol. 8, No. 2. Brooklyn, New York, 1992.
- U.S. Army Corps of Engineers. *Navigation Study for Ft. Pierce Harbor, Florida-10196 Draft General Reevaluation Report and Supplement to the Final EIS*. Jacksonville, Florida, January 1994.
- U.S. Army Corps of Engineers. Palm Beach Harbor, Florida: *Feasibility Report and Environmental Assessment*. Jacksonville, Florida, August 1984.
- U.S. Department of Commerce. *1980 Characteristics of Population: General Social and Economic Characteristics of Florida, Section 2 of 2, PC80-C11*. Washington, D.C.: U.S. Government Printing Office, 1984.
- U.S. Department of Commerce. *1990 Census of Population: Social and Economic Characteristics of Florida, Section 1 of 3, 1990 CP-Z-11*. Washington, D.C.: U.S. Government Printing Office, 1994.

- U.S. Department of Commerce. *Statistical Abstract of the United States*, 1994. Washington, D.C.: U.S. Government Printing Office, September 1994.
- U.S. Department of Transportation. *A Guide to Land Use and Public Transportation - Final Report*. Washington, D.C.: U.S. Government Printing Office, December 1989.
- U.S. Department of Transportation. *The New Suburb-Final Report*. U.S. Government Printing Office. Washington, D.C., July 1991.
- U.S. House of Representatives. *Compact Cities: A Neglected Way of Conserving Energy. Joint Hearings Before the Subcommittee on the City of the Committee on Banking, Finance and Urban Affairs*. Washington, D.C.: Government Printing Office, December 1979.
- University of Florida, *Technology Transfer Quarterly*. Vol. 10, No. 2. Gainesville, Florida, May 1995.
- Unterman, R. *Streets Are For Sharing*. Landscape Architecture Vo. 18, No. 7. Los Angeles, California, 1990.
- Urban Land Institute, *Land Use Digest* Vol. 26, No. 11. Chicago, Illinois, November 1993.
- Urban Land Institute, *Land Use Digest* Vol 26, No. 6. Chicago, Illinois, June 1993 .
- Wachs, M. and Crawford, M. *The Car and the City: The Automobile, the Built Environment and Daily Urban Life*. Ann Arbor, Michigan: University of Michigan Press, 1992.
- Walters, J. *The Highway Revolution that Wasn't*. Washington, D.C.: Governing: The Magazine of States and Localities, May 1995.
- Zuckerman, W. *End of the Road: The World Car Crisis and How We Can Solve It*. Cambridge, Massachusetts: Lutterworth Press, 1991.