

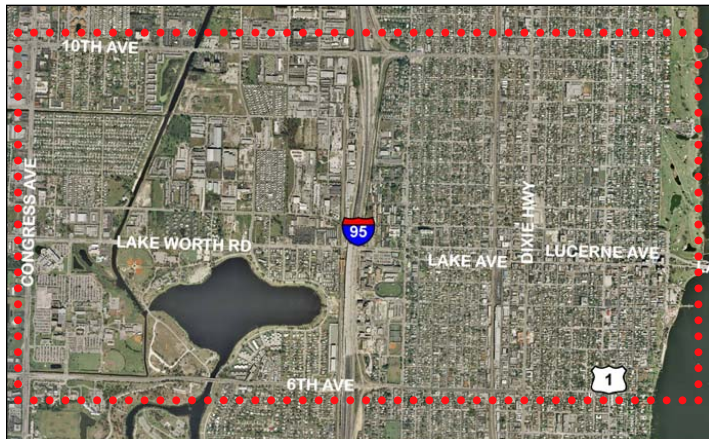


# Everyone is Invited



## THE CITY OF LAKE WORTH TRANSIT-ORIENTED DEVELOPMENT CHARRETTE

The City of Lake Worth, the Lake Worth Community Redevelopment Agency, and the Treasure Coast Regional Planning Council invite all interested residents, property, and business owners, to participate in a public design charrette to create a vision for the future of redevelopment opportunities along the FEC and CSX (Tri-Rail) corridors in downtown Lake Worth. The concerns and ideas you express during this process can significantly influence the direction of growth in your town as it relates to regional transit opportunities.



The aerial image above depicts the charrette study area boundaries: 10 Ave. North (north); 6th Ave. South (south); Lake Worth Lagoon (east); Congress Avenue (west).

### CHARRETTE PUBLIC WORK SESSION

Saturday June 21st, 2008 – 10:00 am to 3:00 pm  
Lake Worth Shuffleboard Building  
1121 Lucerne Avenue, Lake Worth  
Refreshments and lunch will be provided

Participants will be working with neighbors and with a team of professionals on their vision for the area. At the end of the day, citizens will present their ideas for the future of the area.

### STUDIO

Sunday, June 22nd through Thursday, June 26th  
9:00 am to 9:00 pm  
Lake Worth Shuffleboard Building  
1121 Lucerne Avenue, Lake Worth

Public invited to Studio to give additional input and view the on-going work. No appointment necessary.

### PRESENTATION OF WORK IN PROGRESS

Friday June 27th, 2008 – 6:00pm – 8:00pm  
Lake Worth Shuffleboard Building  
1121 Lucerne Avenue, Lake Worth

This two-hour session consists of a presentation of work in progress to unveil the conceptual master plan and to take additional citizen and professional input.

For more information please contact the Lake Worth CRA office at (561) 493-2550, or Dana Little, TCRPC at (772) 221-4060, or visit:  
[www.lakeworthcra.org](http://www.lakeworthcra.org) or [www.tcrpc.org](http://www.tcrpc.org)



The Lake Worth TOD Charrette will explore redevelopment opportunities in downtown Lake Worth as it relates to the FEC and Tri-Rail service corridors. The charrette will also look at downtown retailing issues and a Lake Worth Park of Commerce update.

#### WHAT IS A CHARRETTE?

Charrette means "cart" in French. Various architectural school legends hold that at the Ecole des Beaux Arts in 19th Century Paris, a small cart would go around town collecting students' work to take it back to the school to be juried by the master architect. Of course students always had last minute changes and fine tuning they wanted to do to their drawings, so they would jump on the cart with their projects, and continue working intensely until the cart arrived at the Ecole. Today, the term is used to describe a high speed, intense creative session in which a team concentrates on specific design problems with citizens and presents solutions.

This effort is made possible through the generous support of the Palm Beach County MPO; the Florida DOT; the South Florida Regional Transportation Authority; the City of Lake Worth; and the Lake Worth CRA.