

# Infill & Redevelopment

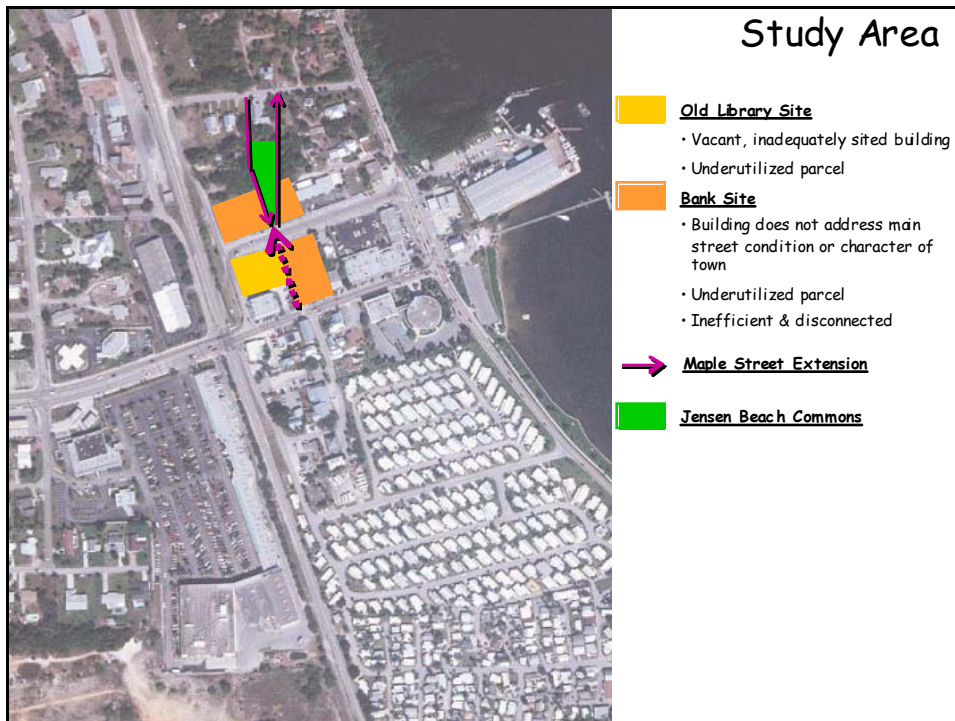
## *Old Library & Wachovia Bank Sites*



Prepared by

Treasure Coast Regional Planning Council

Jensen Beach NAC, July 14, 2003



Maple Street Extension

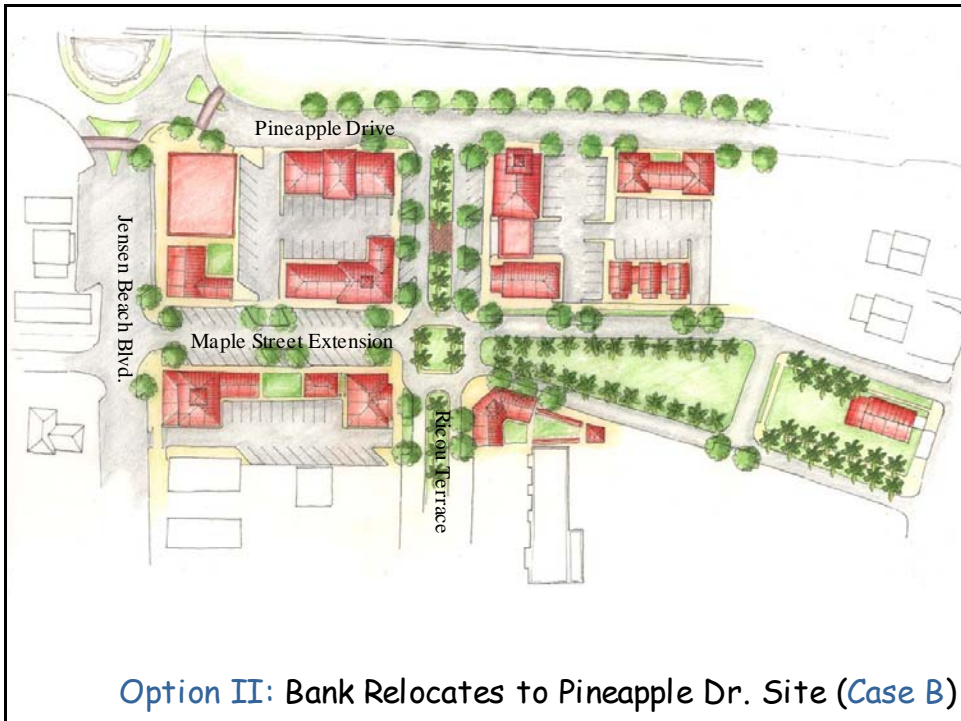


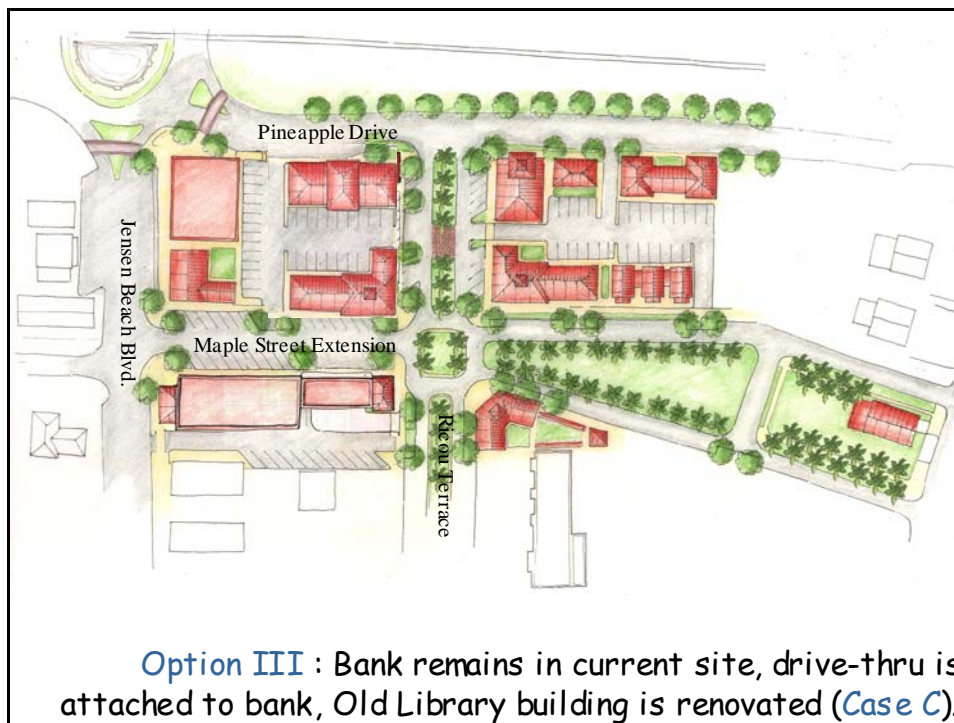
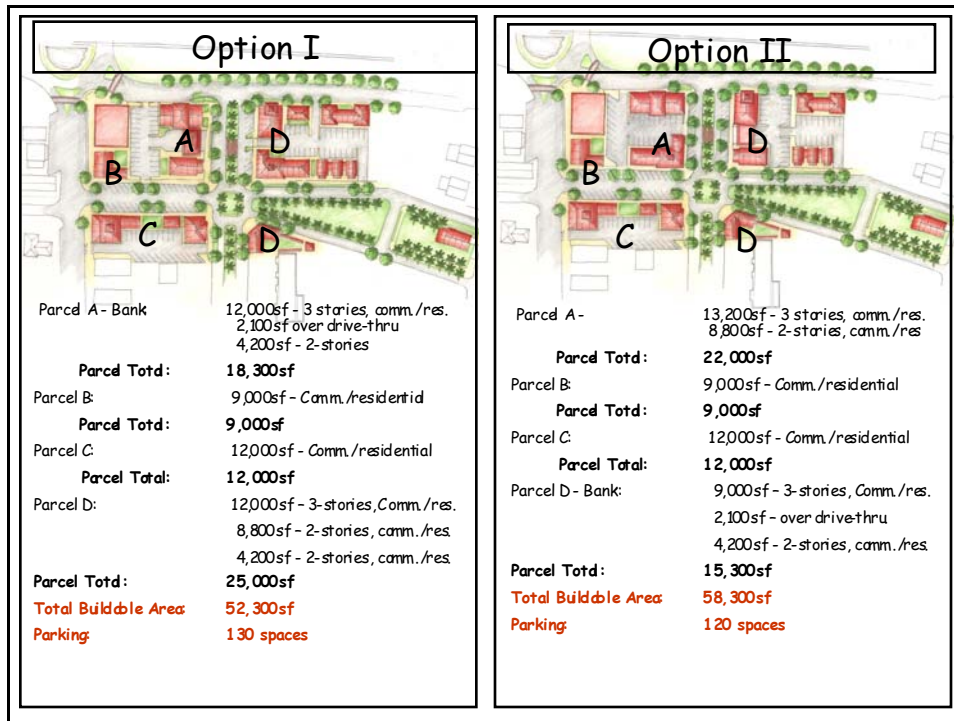
Maple Street Extension



It Can Happen Today!









## Defining Character



# Defining Character







## What's Next?

- Analyze economic feasibility of proposals
- Instruct staff to involve bank and explore options
  
- Work with bank to extend Maple St. to Ricou Terr.
- Work with church & other property owners to extend Maple St. to C
- Advertise and

